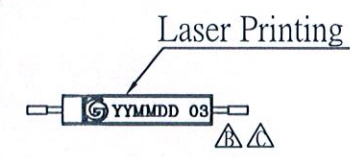
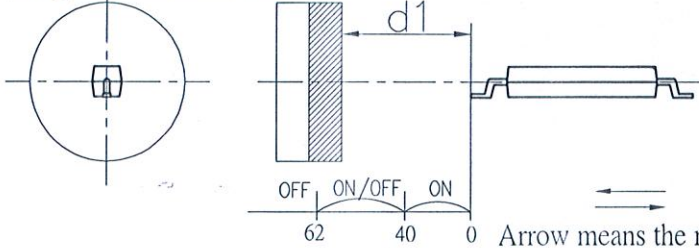


# SPECIFICATION

|                 |  |      |                 |                |                 |
|-----------------|--|------|-----------------|----------------|-----------------|
| CUSTOMER NAME   |  | TYPE | Position Sensor | PART NO.       | Z1-GPS-11-SMD03 |
| 1.Specification |  |      |                 | CUSTOMER NO    |                 |
|                 |  |      |                 | CUSTOMER CHECK |                 |

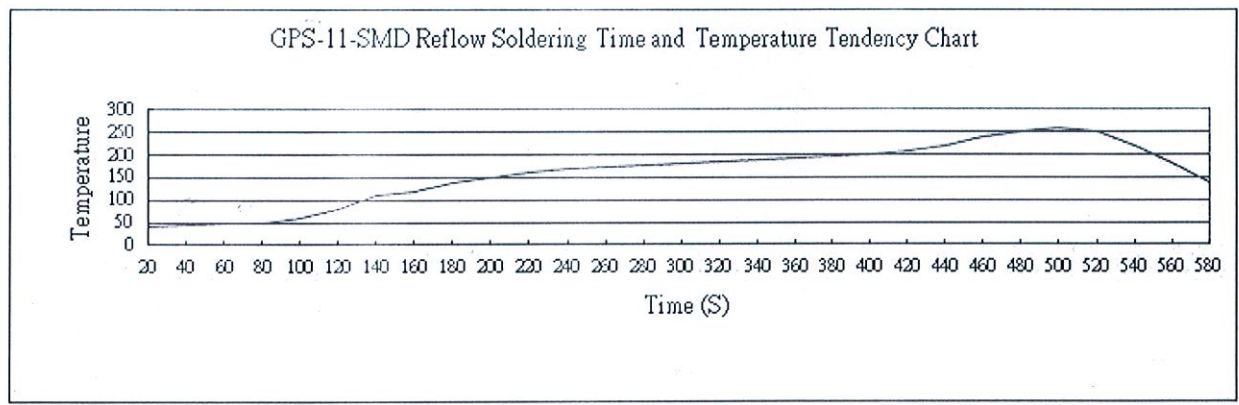
## 2.Actuating description

The tested magnet spec: MEG1- $\phi$ 15x10-N35,  $\triangle$   
 The magnet surface reference gauss value  $4300 \pm 500$ ,  
 The gaussmeter is HT108



UNIT : mm  
 Unspecified Tolerance: x. : $\pm 0.3$ mm  
 x.x : $\pm 0.2$ mm  
 $\triangle$  Laser marking signification :  
 $\triangle$  YY - means Year (eg:14)  
 $\triangle$  MM - means Month (eg:12)  
 DD- means Day(eg:10)

Arrow means the magnet moving direction



|         |               |             |   |           |
|---------|---------------|-------------|---|-----------|
| 04      | $\triangle$   | 2015/12/2   | Revised the Operation Temperature   | QinJun    |
| 03      | $\triangle$   | 2014/12/10  | Revise the laser printing marking. change the GD work order number into production date | Lee Li    |
| 02      | $\triangle$   | 2014/10/07  | Modify the laser marking indication   | Lee Li    |
| 01      | $\triangle$   | 2013/08/26  | Adding instruction of product operation test on the drawing.                            | QLM       |
| Edition | Change Remark | Modify Date | Reason  | Modify By |

| Material Specification     | Operating Characteristic                         |                                 |             |
|----------------------------|--|---------------------------------|-------------|
| 1. Sensor body : LCP Black | 1. Contact from : A                              | 9. Tempe operating : -40~+125°C | $\triangle$ |
|                            | 2. Max Contact Rating : 10 W                     |                                 |             |
|                            | 3. Max Switching Voltage : 100 Vdc               |                                 |             |
|                            | 4. Min Breakdown Voltage : 150 Vdc               |                                 |             |
|                            | 5. Max Switching Current : 0.5 A                 |                                 |             |
|                            | 6. Max Contact Resistance : 200m $\Omega$        |                                 |             |
|                            | 7. Min Insulation Resistance: $10^9 \Omega$      |                                 |             |
|                            | 8. Electrical Life: $5 \times 10^6$ (5VDC, 10mA) |                                 |             |

|  |              |            |                              |              |           |
|--|--------------|------------|------------------------------|--------------|-----------|
|  | Rechecked by | Checked by | Drawing by                   | Drawing Date | Scale     |
|  |              |            | Filename Z1-GPS-11-SMD03_Spc |              |           |
|  |              |            | Drawing NO. Z1-GPS-11-SMD03  | Edition 04   | Sheet 1/1 |